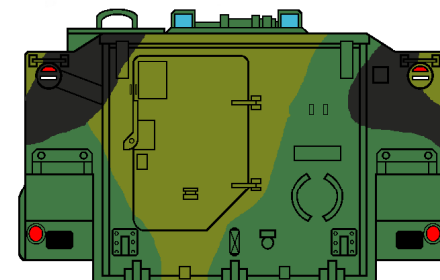
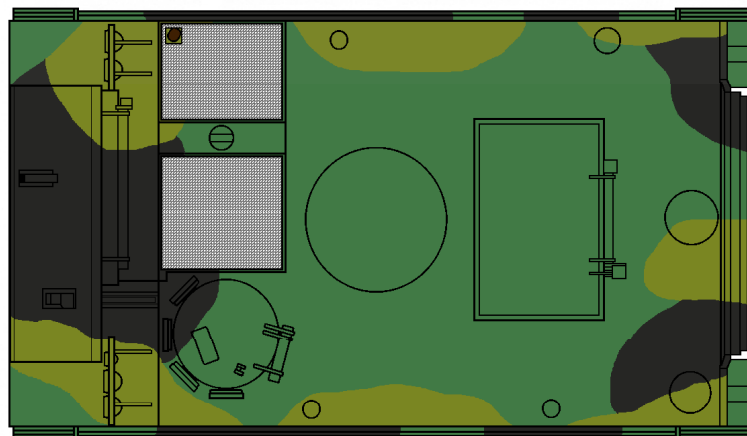
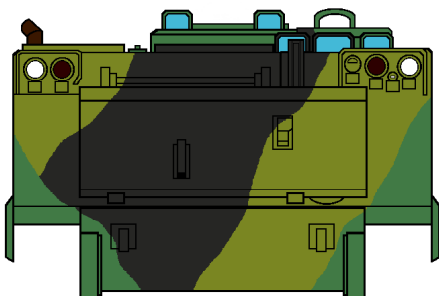


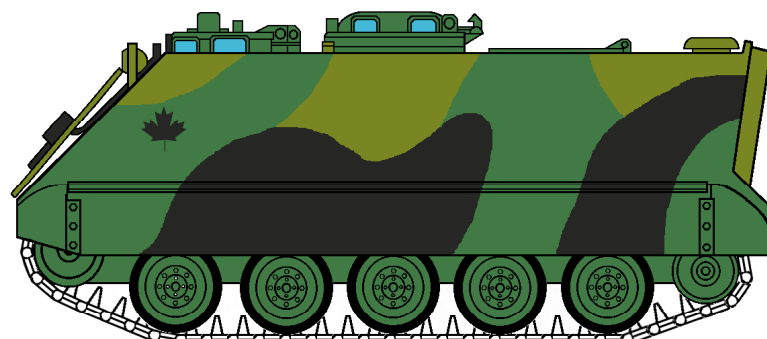
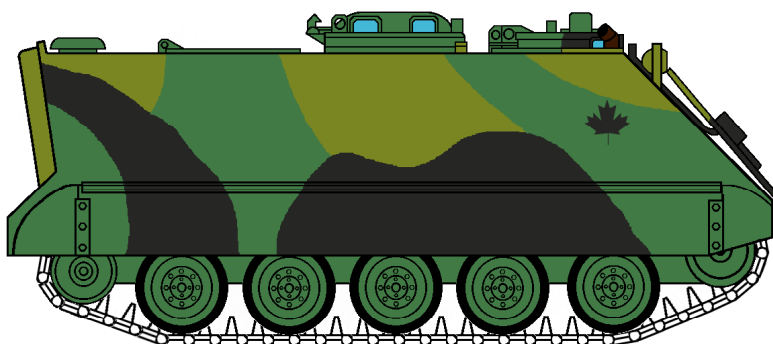
Canadian M113A1 - European Pattern

- FS 36081 Black
- FS340098 Khaki Drab
- FS34172 Green



Note: this is a pattern only, showing new paint colours. Every vehicle could, and usually did, have a variation in pattern from trivial to major. All three colours faded very quickly and were drastically altered by dirt and dust. The older and more faded the green became, the more it tinted blue. The khaki merely lightened and the black faded. Touch-ups were frequent and very obvious.

This pattern is the official scheme as used by 4 Canadian Mechanized Brigade Group in Germany from 1969. For winter the black was white-washed.



Researched and drawn by Barry Beldam (C) 2003